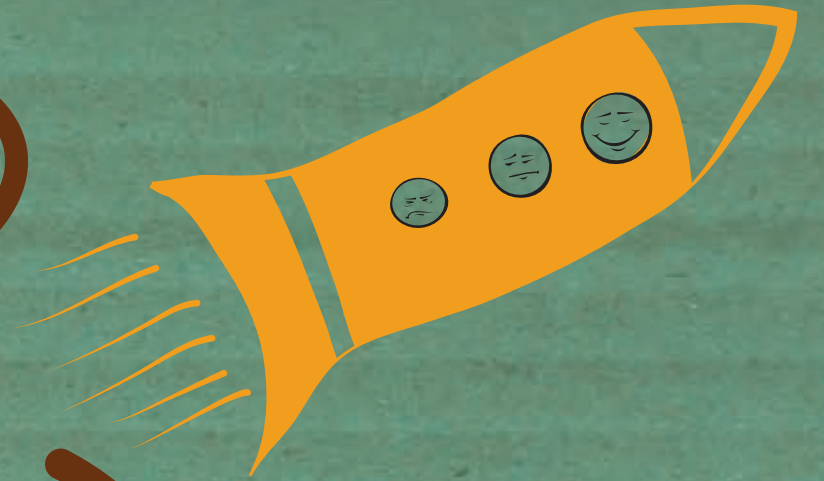




It's not rocket science...



Empathy/Learning Preference

1
Create Comfort

Find a way that I can do it

We learn best when you...

2
Provide Challenge

Facilitate my next learning step

Notice and Adjust teaching / Interventions

3
Allow Competence

Let me show you what I can do

Accommodations / Special Assessment Conditions

4
See Confidence

I know what I can do and what I need

Self Advocacy